



# GAT MONTHLY MEMBERSHIP PROGRESS REPORT

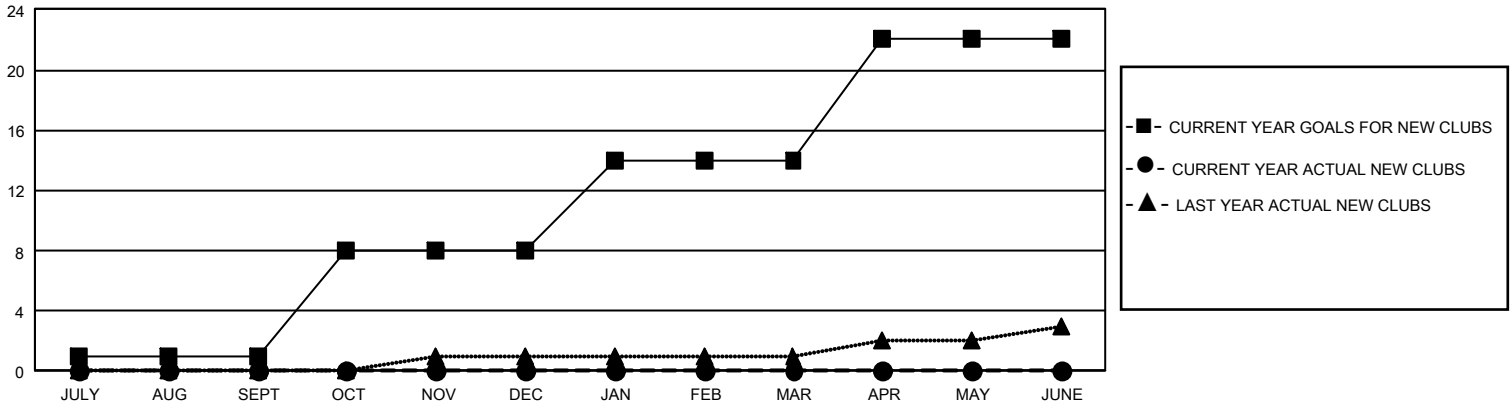
Results as of: 8/31/2022

## GMT Constitutional Area 1, Group C

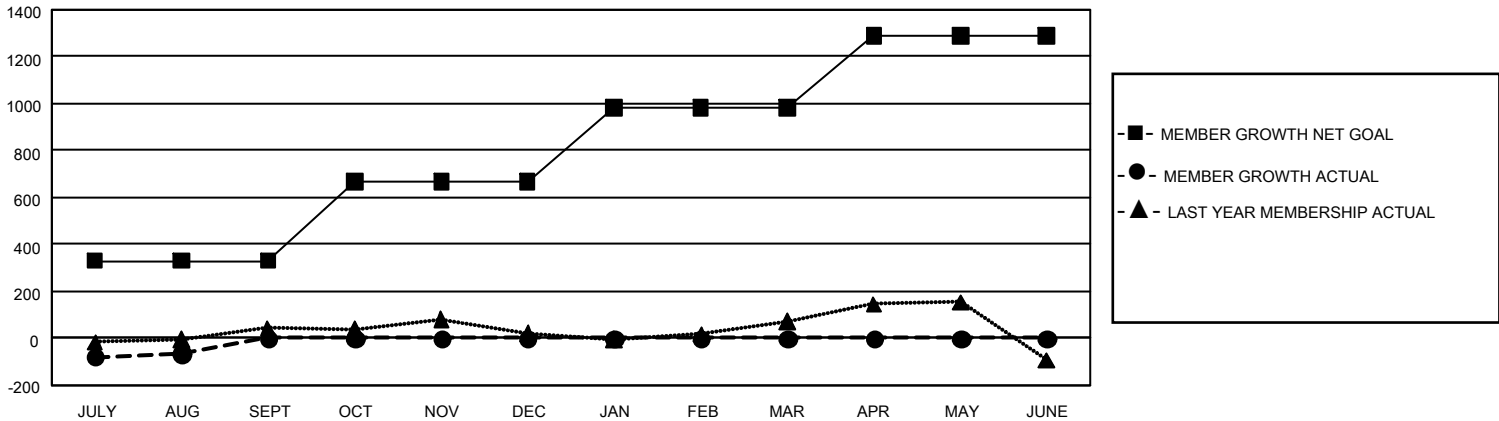
REPORT DOES NOT INCLUDE CLUBS IN UNDISTRICTED AREAS.

Clubs				Members			
RESULTS FOR 2022-2023				RESULTS FOR 2022-2023			
QUARTER	NEW CLUB GOAL	NEW CLUBS	DROPPED CLUBS	QUARTER	MEMBER GROWTH NET GOAL	MEMBER GROWTH ACTUAL	DROPPED MEMBERS ACTUAL (including transfers)
JULY/AUG/SEPT	3	0	4	JULY/AUG/SEPT	330	285	299
OCT/NOV/DEC	21	0	0	OCT/NOV/DEC	338	0	0
JAN/FEB/MAR	18	0	0	JAN/FEB/MAR	313	0	0
APR/MAY/JUNE	24	0	0	APR/MAY/JUNE	308	0	0

GOALS AND ACTUAL NEW CLUBS CUMULATIVE



GOALS AND ACTUAL MEMBERS CUMULATIVE



DROPPED CLUBS: 4	135 CLUBS OF 628 ADDED 1 OR MORE NEW MEMBERS	<u>GENDER DISTRIBUTION</u>	
<u>DROPPED MEMBERS</u>		MALE	13,272 (68.18%)
DECEASED	43	FEMALE	6,186 (31.78%)
CLUB CANCELLED	17	NON BINARY	0 (0.00%)
OTHER	240	PREFER NOT TO ANSWER	7 (0.04%)
TOTAL	300	TOTAL FAMILY UNIT MEMBERS	3,910
	<a href="#">CLICK HERE FOR CUMULATIVE MEMBERSHIP DATA</a>	FAMILY MEMBERS PAYING HALF DUES	1,980